











**AUTOMAX**  
AUTOMAX.ae © +971 54 279 8800 • +971 4 3205660











Jeep

AIRBAG

OK

SET+  
CANC  
RES  
SET-

VOLUME

FRONT  
OFF  
AUTO

MUTE  
OFF  
OFF

DO NOT PRESS

Driver Assist

Adaptive Cruise Control (ACC)

88°F

NW

0 20 40 60 80 100 120 140 160 180 200 220 240 260 280 300 320 340 360 380 400 420 440 460 480 500 520 540 560 580 600 620 640 660 680 700 720 740 760 780 800 820 840 860 880 900 920 940 960 980 1000

0 20 40 60 80 100 120 140 160 180 200 220 240 260 280 300 320 340 360 380 400 420 440 460 480 500 520 540 560 580 600 620 640 660 680 700 720 740 760 780 800 820 840 860 880 900 920 940 960 980 1000



Adaptive  
Cruise Control  
(ACC)  
Off

Jeep

AIRBAG

△  
◁ OK ▷  
▽

📞  
🗣️  
📞

↔️  
☰  
↑  
↓



ep

SET+

CANC

RES

SET-

START  
ENGINE  
STOP



NW 5. Fuel Economy 79°F

15  
0 14.2 Average MPG 30+  
Range 191 km Current 0  
Hold OK to Reset  
P  
29 km

The central display features a fuel economy gauge with a needle at 14.2 MPG. It also shows a range of 191 km, a current fuel level of 0, and a gear indicator set to P. The temperature is 79°F and the compass points NW.





NW 6.0 Trip Info 79°F

29.7 km  
14.2 MPG  
05:35:25  
OK to Reset All Trip A  
P  
29 km

H  
C  
F  
E





NW 4.0 Driver Assist 79°F

Adaptive Cruise Control (ACC) Off

P 29 km

The central instrument cluster displays navigation direction (NW), gear selection (4.0), driver assist status (Driver Assist), temperature (79°F), Adaptive Cruise Control status (ACC Off), and parking status (P 29 km). It also features a compass and a fuel gauge.





NW 3.0 Off Road 79°F

0°

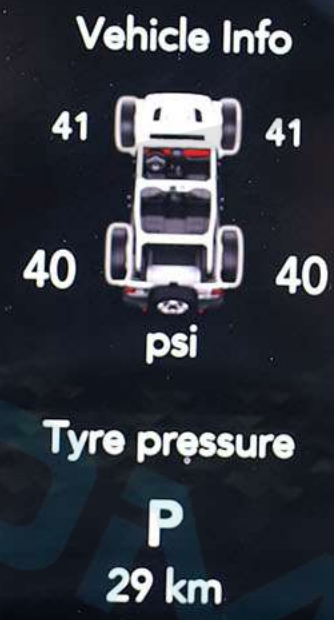
Drivetrain

P

29 km

The central digital display shows a compass heading of 'NW', a gear indicator '3.0', and 'Off Road' mode. A vehicle chassis diagram shows a 0° steering angle. Below it, 'Drivetrain' is shown with a green indicator, and 'P' (Park) is displayed. A fuel gauge on the right shows approximately 3/4 full. At the bottom, a range indicator shows '29 km'.







DO NOT PRESS

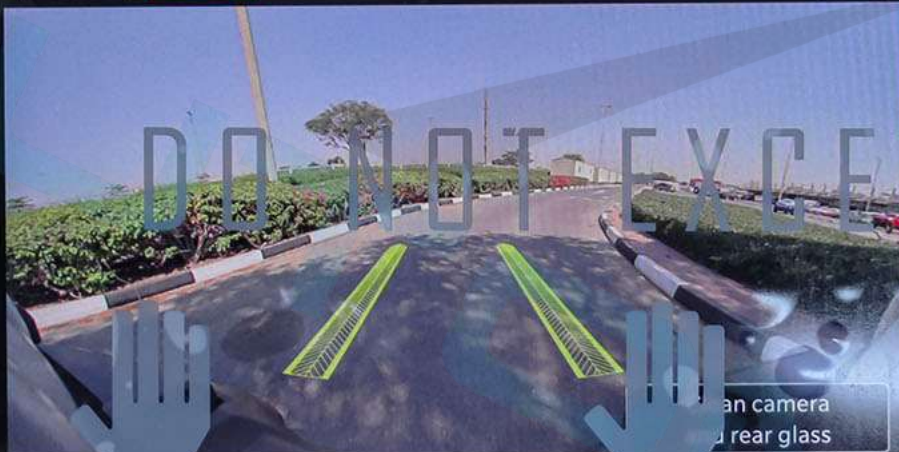


Jeep





DO NOT PRESS



Clean camera  
and rear glass

DO NOT EXCEED 100km/h



- Home
- Media
- Comfort
- Nav
- Phone
- Vehicle
- Apps

LO | | 79° OUT | 10:15 CLUBFM | LO

Favorites

All

**DO NOT EXCEED 100 KPH**

Media  
Comfort

Comfort

Driver Heat

Heated Wheel

Psgr Heat

Nav  
Phone



LO



79°  
OUT

10:15

FM CLUBFM



LO

Favorites

All



Nav

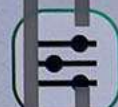
Phone

Vehicle

System



Audio Settings



Controls



Forward Cam



Mirror Dimmer



Off Road Pauses



Rear View Camera



Select. Tire Fill Alert



Settings

D O N O T E X C E E D 1 0 K





Home



Media



Comfort



NW

Nav



Phone



Vehicle



Apps

LO



79°  
OUT

10:14

FM CLUBFM



LO

Off Road Pages

**DO NOT EXCEED 10Kg**

Vehicle Dynamic

Steering Angle

Accessory Gauges

Transfer Case  
Unlocked



Pitch & Roll

Front  
Camera

2H

55%

25°10'07" N

Altitude: -20 m



Home



Media



Comfort



Nav



Phone

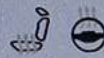


Vehicle



Apps

LO



79°  
OUT

10:14



CLUBFM



LO

Off Road Pages

Vehicle Dynamics

Accessory Gauges

Pitch & Roll

Front Camera



2H

55%

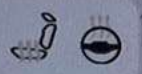
25°10'07" N

Altitude: -20 m

DON NOT EXCEED 10 KG

- Home
- Media
- Comfort
- Nav
- Phone
- Vehicle
- Apps

LO



79°  
OUT

10:14

FM CLUBFM



LO

Off Road Pages

DO NOT EXCEED 10KG

Vehicle Dynamics

Accessory Gauges

Pitch & Roll

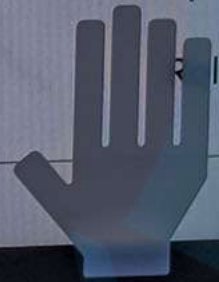
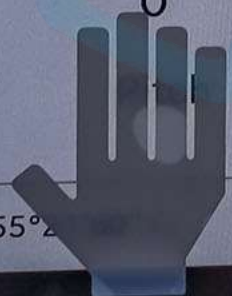
Front Camera

2H

55%

25°10'07" N

Altitude: -20 m





Home



Media



Comfort



NW

Nav



Phone



Vehicle



Apps

LO



79°  
OUT

10:14

FM CLUBFM



LO

DO NOT EXCEED 10K g



Heat

Heat

Max A/C

A/C

Rear

Sync

Off

1

3

4

5

6

7

Auto







Home



Media



Comfort



Nav



Phone

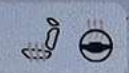


Vehicle



Apps

LO



79°  
OUT

10:14



LO

Sources

Playing

Browse

Audio Settings

Balance / Fade

Equalizer

Speed Adjusted  
Volume

Link Volume Offset

DO NOT EXCEED 10 Kg





VOLUME

POWER

FRONT

WIPER

WIPER

OFF

AUTO

MODE

A/C

TUNE

BROWSE

ENTER

SCROLL

MUTE

OFF

OFF

OFF

OFF

OFF

SCREEN

OFF

IGNITION

DRIVE MODES

MEDIA

2H

4H

4L

2H

4H

4L

P

R

N

D

M

M

D

R

T

Volume knob: VOLUME, power icon

Climate controls: FRONT, OFF, AUTO, MODE, A/C

Navigation: TUNE, BROWSE, ENTER, SCROLL

Other buttons: MUTE, OFF (A), OFF (car), OFF (P), SCREEN OFF

Handbrake

Gear selector









**WARNING** **AVERTISSEMENT**

**WARNING WITH ADVANCED AIRBAGS:** CHILDREN CAN BE KILLED OR SERIOUSLY INJURED IF SEATED IN THE FRONT SEAT WITH ADVANCED AIRBAGS. THE AIRBAGS IN THE FRONT SEAT ARE DESIGNED TO PROTECT ADULTS. CHILDREN SHOULD ALWAYS BE SEATED IN THE REAR SEAT. ALWAYS USE THE REAR SEAT FOR CHILD SEAT INSTALLATION. ALWAYS USE THE REAR SEAT FOR CHILD SEAT INSTALLATION. ALWAYS USE THE REAR SEAT FOR CHILD SEAT INSTALLATION. ALWAYS USE THE REAR SEAT FOR CHILD SEAT INSTALLATION.

**MISE EN GARDE:** LES ENFANTS PEUVENT ÊTRE TUÉS OU BLESSÉS GRAVEMENT SI ILS SONT ASSIS SUR LE SIÈGE AVANT AVEC DES AIRBAGS AVANCÉS. LES AIRBAGS AVANCÉS SONT CONÇUS POUR PROTÉGER LES ADULTES. LES ENFANTS DOIVENT TOUJOURS ÊTRE ASSIS SUR LE SIÈGE ARRIÈRE. TOUJOURS UTILISER LE SIÈGE ARRIÈRE POUR L'INSTALLATION D'UN SIÈGE ENFANT. TOUJOURS UTILISER LE SIÈGE ARRIÈRE POUR L'INSTALLATION D'UN SIÈGE ENFANT. TOUJOURS UTILISER LE SIÈGE ARRIÈRE POUR L'INSTALLATION D'UN SIÈGE ENFANT. TOUJOURS UTILISER LE SIÈGE ARRIÈRE POUR L'INSTALLATION D'UN SIÈGE ENFANT.

**WARNING** **AVERTISSEMENT**

**WARNING:** CHILDREN CAN BE KILLED OR SERIOUSLY INJURED IF SEATED IN THE FRONT SEAT WITH ADVANCED AIRBAGS. THE AIRBAGS IN THE FRONT SEAT ARE DESIGNED TO PROTECT ADULTS. CHILDREN SHOULD ALWAYS BE SEATED IN THE REAR SEAT. ALWAYS USE THE REAR SEAT FOR CHILD SEAT INSTALLATION. ALWAYS USE THE REAR SEAT FOR CHILD SEAT INSTALLATION. ALWAYS USE THE REAR SEAT FOR CHILD SEAT INSTALLATION. ALWAYS USE THE REAR SEAT FOR CHILD SEAT INSTALLATION.

**MISE EN GARDE:** LES ENFANTS PEUVENT ÊTRE TUÉS OU BLESSÉS GRAVEMENT SI ILS SONT ASSIS SUR LE SIÈGE AVANT AVEC DES AIRBAGS AVANCÉS. LES AIRBAGS AVANCÉS SONT CONÇUS POUR PROTÉGER LES ADULTES. LES ENFANTS DOIVENT TOUJOURS ÊTRE ASSIS SUR LE SIÈGE ARRIÈRE. TOUJOURS UTILISER LE SIÈGE ARRIÈRE POUR L'INSTALLATION D'UN SIÈGE ENFANT. TOUJOURS UTILISER LE SIÈGE ARRIÈRE POUR L'INSTALLATION D'UN SIÈGE ENFANT. TOUJOURS UTILISER LE SIÈGE ARRIÈRE POUR L'INSTALLATION D'UN SIÈGE ENFANT. TOUJOURS UTILISER LE SIÈGE ARRIÈRE POUR L'INSTALLATION D'UN SIÈGE ENFANT.













MM0823



**Jeep**®

|||| DOT110388FKC-NH-7498

ASH 23



43R-0120269



EQ001488



23



SAH ACOUSTIC

TRANSP. 70% MIN.

MADE IN USA

PG2519033AA

**CORNING | Gorilla Glass**







**AUTOMAX**  
AUTOMAX.ae 971 54 279 8888 971 4 3209888





TRAIL  
RATED  
4x4

®

SAHARA

Jeep

WRANGLER



Manufacturer Name **FCA US LLC** اسم المصانع

Model Year **2024** سنة النموذج Label No **160986** رقم البطاقة

Vehicle Type **FCA US LLC JEEP WRANGLER UNLIMITED 2.0L SUV 4WD 4Doors** طراز المركبة

Fuel Economy **اقتصاد الوقود**



 <b>هيئة التقييس</b> لجنة معيّنات المعايير الدولية الخليج العربية GCC Standardization Organization	Fuel Type <b>بنزين</b> نوع الوقود <b>Gasoline Euro IV</b>	
	Fuel Economy <b>12.1 km/L</b> اقتصاد الوقود	
	Vehicle Class <b>Light Truck</b> فئة المركبة	

إزالة أو تغطية أو إتلاف هذه البطاقة قبل البيع يعرض للملاحقة القانونية  
Removing, covering or damaging this label before sale is punishable by law







SAHARA

Jeep

WRANGLER

BRIDGESTONE

DUELER H/T 95

2022 M110 17X10 150  
DOT 0141 0141

BRIDGESTONE TIRE & RIM COMPANY  
10000 W. 111th St., Overland Park, KS 66211  
www.bridgestone.com





لمشاهدة صورة السيارة بزاوية 360 درجة إضغط على الصورة أعلاه

Для просмотра автомобиля в формате 360°, пожалуйста, нажмите на фото выше.

To view the 360° degree please press on the picture above

# 2024 JEEP WRANGLER UNLIMITED SAHARA 14 2.0L 4X4 GCC OKm

Бренд: Jeep

Brand: Jeep

الماركة: جيب

Категория: Wrangler Unlimited

Category: Wrangler Unlimited

الفئة: رانجلر أنلنمتد

Модель: Sahara

Model: Sahara

الموديل: صحاري

Год: 2024

Year: 2024

السنة: 2024

Километров: 0 Km

Kilometers: 0 Km

كيلومترات: 0 كم

Двери: 4 Doors

Doors: 4 Doors

عدد الأبواب: 4 أبواب

Цвет: Белый

Color: Bright White

اللون: أبيض

Цилиндр: 4

Cylinder: 4 Cylinders

عدد الأسطوانات: 4 أسطوانات

Лошадиные силы: 270 HP

Horsepower: 270 HP

عدد الأحصنة: 270 حصان

Трансмиссия: Автоматическая

Transmission: Automatic

نوع النقل: نقل أوتوماتيكي

Топливо: Бензин

Fuel: Gasoline

المواصفات الإقليمية: خليجية

نوع الوقود: بنزين



# 2024 JEEP WRANGLER UNLIMITED SAHARA 14 2.0L 4X4 GCC 0Km

MCKINLEY TRIMMED SEATS

BLACK

MIDDLE EAST EQUIPMENT GROUP

CONVENIENCE GROUP

TECHNOLOGY GROUP

SAFETY GROUP

SMOKER'S GROUP

FMVSS MIDDLE EAST GROUP

AUX BATTERY

ANTI-LOCK 4-WHEEL FNC DISC HD BRAKES

MOPAR HARDTOP HEADLINER

FREEDOM PANEL STORAGE BAG

REMOVABLE ASH TRAY

LEATHER WRAPPED PARK BRAKE HANDLE

LEATHER WRAPPED SHIFT KNOB

HARD SEAT BACK

#1 SEAT FOAM CUSHION

ALL AUTOMATIC TRANSMISSIONS

8-SPD AUTO 850RE TRANS (MAKE)

2.72:1 SELEC-TRAC FULL TIME 4WD SYS

2.0L 14 DOHC DI TURBO ENGINE W/ ESS

SOLAR CONTROL GLASS

REAR WINDOW DEFROSTER

REAR VIEW AUTO DIM MIRROR

BODY COLOR 3-PIECE HARD TOP

200 KPH PRIMARY SPEEDOMETER

REAR WINDOW WIPER/WASHER

CIGAR LIGHTER

230V AUXILIARY POWER OUTLET

GPS NAVIGATION

AIR FILTERING

POWER 4-WAY DRIVER LUMBAR ADJUST

# 2024 JEEP WRANGLER UNLIMITED SAHARA 14 2.0L 4X4 GCC 0Km

POWER 4-WAY PASSENGER LUMBAR ADJUST

DRIVER SEAT - POWER ADJUST 8-WAY

FRT PASS SEAT - POWER ADJUST 8-WAY

EXTERIOR MIRRORS W/ARABIC LETTERING

AUTO HIGH BEAM HEADLAMP CONTROL

REAR FOG LAMPS

FRONT WIDE LICENSE PLATE BRACKET

WRANGLER DECAL

SIDE STEPS

EXPORT EMISSIONS

U.S. EMISSIONS W/OBD 1

BRIGHT WHITE CLEAR COAT

ALPINE PREMIUM AUDIO SYSTEM

APPLE CARPLAY

DISASSOCIATED TOUCHSCREEN DISPLAY

GOOGLE ANDROID AUTO

12.3" TOUCHSCREEN DISPLAY

DIGITAL AUDIO BROADCASTING

INTEGRATED CENTER STACK RADIO

ALL R1 HIGH RADIOS

NO SOFT TOP

BRIDGESTONE BRAND TIRES

UCONNECT 5 NAV W 12.3" DISP(ROW+DAB)

ALL ALUMINUM WHEELS

PARKSENSE REAR PARK ASSIST SYSTEM

BLIND SPOT AND CROSS PATH DETECTION

TIP START

STOP-START DUAL BATTERY SYSTEM

LOCK FUEL CAP W/ DISCRIMINATOR

ARABIC LANGUAGE

INTEGRATED OFF-ROAD CAMERA

INTEGRATED VOICE COMMAND W/BLUETOOTH

MANUF STATEMENT OF ORIGIN

4 ADDITIONAL GALLONS OF GAS

# 2024 JEEP WRANGLER UNLIMITED SAHARA 14 2.0L 4X4 GCC 0Km

Gorilla Glass Windshield

камера переднего вида

OFF-ROAD PAGES

Камера Заднего Вида

Зимний Пакет

Адаптивный Круиз-контроль

Подогрев Сидений

Боковые Зеркала с Подогревом

Рулевое Колесо с Подогревом

ALPINE Премиальная Мультимедийная Система

Боковые Зеркала с Подогревом

Датчик Давления в Шинах

Дистанционный Запуск Двигателя

USB пакет

Система Мониторинга Слепых Зон

12.3" Сенсорный Экран

Бесключевой Доступ

Apple CarPlay

Ограничитель Скорости

Android Auto

# 2024 JEEP WRANGLER UNLIMITED SAHARA 14 2.0L 4X4 GCC OKm

\* الأداء:

سعة المحرك: 2.0 لتر

ناقل سرعة أوتوماتيكي ب 8 سرعات

عدد الأسطوانات: 4 أسطوانات

عدد الأحصنة: 270 حصان

العزم: 399 نيوتن/متر

\* المواصفات الإضافية:

Gorilla Glass Windshield

OFF-ROAD PAGES

مثبت سرعة تكييفي

محدد سرعة إلكتروني

كاميرا أمامية + خلفية

خاصية تدفئة المرايا

خاصية تدفئة المقود

خاصية تسخين المرايا الجانبية

التشغيل عن بعد

خاصية اكتشاف النقطة العمياء

نظام صوتي متقدم من ALPINE

عوازل حرارية للسقف

# 2024 JEEP WRANGLER UNLIMITED SAHARA 14 2.0L 4X4 GCC OKm

دخول بصمة

عتبات جانبية

شاشة قياس 12.3 بوصة

نظام الملاحة وتحديد المواقع

مراتب كهربائية متعددة الوضعيات

آمر صوتي متكامل مع بلوتوث

نظام البطارية المزدوج للبدء والتوقف

نظام مراقبة وعرض ضغط الهواء في الإطارات

مخرج طاقة 230 فولط

أبل كاربلاي

أندرويد أوتو



# AUTOMAX®

The Boutique Of Muscle Cars, Truck Fanatics & German Automotive Experts.



تتکلم اللغة العربية

WE SPEAK ENGLISH

ON PARLE LE FRANCAIS

Nosotros hablamos español

мы говорим по-русски

biz o'zbek tilida

gaplashamiz

हम हिंदी बोलते हैं



[automaxgroup.me](http://automaxgroup.me)



[automax group](https://www.youtube.com/automaxgroup)



[automax.dxb](https://www.snapchat.com/add/automax.dxb)



[Automax\\_LLC](https://www.telegram.com/Automax_LLC)



[+971 54 279 8990](https://www.whatsapp.com/+971542798990)



[automax.dxb](https://www.instagram.com/automax.dxb)



[automax.dxb](https://www.facebook.com/automax.dxb)



[automax.dxb](https://www.tiktok.com/automax.dxb)



[automax\\_dxb](https://www.x.com/automax_dxb)



[automax group L.L.C](https://www.linkedin.com/company/automax-group-l-l-c)

New Auto Market - Dubai - United Arab Emirates

[Directions](#)